

# Little Gems



Wild Burro Oatman Area February 2009

photo by Gary Gann

Volume 2 Issue 3

March 2009

## Message from the President

Hi "**GEMSTONERS**":

Wow! Here it is March. The first quarter of the year is over. It is time for the first pot luck dinner and it's the last meeting before the annual gem show. This is a must meeting. The potluck starts at 6:30 sharp. We also have a program after the dinner. Ed Huskinson will be speaking and answering questions on rock and minerals. When Ed is done we will have a general meeting, and there is a lot to cover in a short time.

I *gotta to tell ya*, this first quarter has been a blast. The enthusiasm that has been generated by the members is really a joy. The club seems to be coming together, and having fun doing it. The field trips and exploring trips are growing every month. Check the *Little Gems* or the website for upcoming trips.

The big job this month is to get everything ready for the show. The show chairman will be asking for your help. If you can spare just a few hours on Friday for set up and/or Saturday or Sunday to help on the committees and then on Sunday after the show for break down it would be of great help. Read this month's issue of *Little Gems* for more form the show committee chairman on what all is needed.

For all the help I have received thus far all I can say is thank you! Thank you! Thank you!  
"C"

**Welcome  
New Members  
Charles Robinson  
Allen Zoellner**



March 2009

Board Meeting - March 3rd  
Kingman Library 6:00 PM

Regular Meeting  
March 10th  
Katherine Heidenreich  
Senior Center  
1776 Airway Ave., Kingman, AZ



6:30 POT LUCK

7:00 PM Meeting  
**Special Guest Speaker**  
Ed Huskinson

## Inside this Issue



Club Information  
Minutes  
News  
Message Show Chairman  
Pietersite  
Field Trip Reports  
Field Trip Schedule  
Chilly August in the Calicos  
Lucille Thompson Spotlight  
Aquamarine  
What not Page  
Calendar

## ♣ Club Information ♣

The Mohave County Gemstoners' Club is a member of the Rocky Mountain Federation of Mineralogical Societies (RMFMS) and associated with the American Federation of Mineralogical Societies (AFMS).

The purpose of the Mohave County Gemstoners is to:

1. Stimulate interest in Mineralogy and Lapidary Arts
2. Stimulate individual's interest in cutting and displaying of minerals, fossils and gemstones.
3. Stimulate interest in Stonecutting, carving and setting of fine gems and jewelry.
4. Stimulate interest in other areas, such as faceting, jewelry design, jewelry fabrication and metalsmithing of jewelry.

The Gemstoners meet the second Tuesday of each month at Kathryn Heidenreich Senior Center, 1776 Airway Ave., Kingman, AZ at 7:00 PM. In March, June, September and December there is a potluck dinner that starts at 6:30 PM.

Fiscal year for memberships runs from January 1<sup>st</sup> thru December 31<sup>st</sup>. Dues are \$15.00 per person, \$20.00 per couple and \$25.00 for family (residing in the same home). Family sponsored Junior Membership cost is \$8.00. Annual dues are payable on January 1 and are delinquent after the February meeting. Remit payment to Membership Chairman.

Name badges will be required for all members at a cost of \$8.00 for pin type and \$9.00 for the magnetic type each.

*Little Gems* is published monthly. It is available online at [www.gemstoners.org](http://www.gemstoners.org) Submissions are requested to be to the editors by the 15th of each month, preferably by email :

Donna @ [brisnoon@hotmail.com](mailto:brisnoon@hotmail.com) or @928-263-1480.

*Little Gems* is also published via email - if you have internet, please share your address with the editors. This saves the club money (just under \$1.00 per issue per membership) and you will have the newsletter immediately and be able to view it in color. The Newsletter is in PDF format so it will be necessary to download AdobeReader (free program) in order to view the newsletter.

## ♣ 2009 Club Leadership ♣

Elected Officers:

President - "C" Russell (928) 846-0927  
 Vice President - Pete Hansen (928) 565-4321  
 Secretary - Acting-Carolyn Andrews  
 Treasurer - Dave Sims (928) 692-3797  
 Sergeant At Arms - John Smith  
 Board of Directors:  
 One-Year Position: George Tirpak  
 Two-Year Position: Leonard Deutsch  
 Three-Year Position: Laraine Smith  
 Club Committee Chairpersons

Academic Advisor - Rick Vromen  
 By-Laws - Nan Russell  
 Newsletter Editor - Donna Robinson  
 Education - Open  
 Field Trips - Gary Gann  
 Greeters/Hostess - Open  
 Historian - Leonard Deutsch  
 Jr. Leader - Laurel Nelson  
 Membership - Nan Russell  
 Program Director - Open  
 Publicity - Open  
 Photographer - Open  
 Refreshments - Mary Gann  
 Show Chairman 2009 - Nan Russell  
 Scholarship / Donations - Open  
 Social Director/Special Events - Suzie Green  
 Sunshine - Open  
 50/50 - Open  
 Ways and Means - Open  
 Telephone - John and Laraine Smith  
 Webmaster - Leonard Deutsch

Stay up to date, check often  
[www.gemstoners.org](http://www.gemstoners.org)

Mailing Address:

Mohave County Gemstoners  
 P.O. Box 3992  
 Kingman, AZ 86402





## Minutes of the Mohave County Gemstoners' Meeting

February 16, 2009

President "C" Russell called the meeting to order at 7:05 p. m. and led us in the Pledge of Allegiance.

A welcome to all by and an introduction by "C" of our guest speaker Dick Zimmerman of the Arizona Mineral and Mining Museum who gave a beautiful slide presentation covering the museum history and purpose. Everyone enjoyed Mr. Zimmerman's visit and his expertise in gems and minerals.

Our President, "C", welcomed our new guests Al Zoellner from Golden Valley and Charles Robinson from Kingman.

A brief break was called at 7:55 p. m. and the meeting then transferred to the front room and resumed at 8:15 p. m.

The Treasurer's report was given by Dave Sims. Dave also mentioned that he would order rock calendars which we could purchase at our next meeting for \$11.00 each. He will purchase these from the Arizona Mining and Mineral Museum.

A brief reminder that there is twenty-five cent fine for not wearing badges, The Sergeant of Arms will collect.

Our Editor and Acting Secretary for January, Donna Robinson, read the minutes from our January meeting and it was approved as read.

Sergeant of Arms, John Smith and Sunshine Lady, Lorraine Smith said that Irene Deutsch is feeling much better and recovering nicely.

Nan Russell, Show Chairman and Committee Representative gave committee reports. She introduced and presented name badges to our new members:

Les Nelson , Cheri Hommel, Ed Smith, Fred and Dorothy Bunge.

Nan announced there would be a meeting at her house the next day at 5:00 p.m., to discuss our need for volunteers for our rock show and the details of what needs to be done before the end of March. At the beginning of April is when we set up for our show. We need YOU.

It was also mentioned next month is our Pot Luck. It is every 3rd month that we have this and we ask that you to see Mary Gann in our kitchen to sign up for something you could bring. Everyone counts to make these events successful and we appreciate what all of you do.

Field trip report: Gary Gann reported on the places we have already been and had a nice assortment of rocks found in those locations and labeled rocks to show our members what can be found.

Our trips coming up will be:

February 21st, 2009 Saturday near Wikieup looking for lizard stone.

February 28th, 2009 Saturday near Oatman looking for Squiggly Jasper

In March, we are going to the Alamo Road area looking for ordinary geodes and fluorescent geodes.

Further info will be available at our next meeting on our meeting place and what to bring.

\*Please note: Gary is asking for the clubs input for any suggestions you might have, for our next rock hunting experience.

The 50/50 Raffle totaled \$104.10. We had two prizes, \$31.00 to Doug Gilmore and \$21.00 to our new member Cheri Hommel. The other half goes into the general fund.

The meeting was adjourned at 8:50 p.m.

Respectfully Submitted,

Acting Secretary

Carolyn S. Andrews



### Life Members

Ben and Eiko Bosserman

Betty Bush

Mildred Page

Lucilla Thompson



**Glenda Erwin's** father has passed away. Our condolences to Glenda and her family. She has had a very hard year and is looking forward to returning to a happier life.



**Doug Gilmore** has moved back to California but still wants to join us on some of our outings. Good Luck Doug. We will miss you.



**Fred Powlis**, a former member, and Gemstoners show chairman in the 1980's. who had a life long enjoyment of rocks and minerals passed away in February 14th. His wife, Gladys predeceased him on January 29th.

from Show Chairman

## Nan Russell



I was blown away by the number of members who showed up for our show meeting on January 11th. Now it is up to the rest of the club to help the committee heads to make this a great show in these "hard times". We just have a month to pull everything together.

Things we will need are tumbled rocks for grab bags. Rocks, slabs, and rock mineral and fossil books for our silent auction.

We also need things donated as door prizes. These are given away every hour during the show. For door prizes we will need at least 12 items. These things should be brought to our March 10th meeting. Or to 2400 Broudy by March 20th so we will know what we will still need for the show.

We need people to work with the following committee heads:

|                |                    |                |  |
|----------------|--------------------|----------------|--|
| Ticket Sales:  | Dave Sims          | 692-3797       |  |
| Security:      | Jack Hommel        | 565-5156       |  |
| Raffle Prizes: | Nan Russell        | 846-0927       | in Kingman or Golden Valley dial 1-928 |
|                | Carolyn Andrews    | 757-5782       |  |
| Advertising    | Donna Robinson     | 263-1480       |  |
| Set-up         | Laurel Nelson      | 753-4832       |  |
|                | Mary Gann          | 757-8121       |  |
| Booths         | "C" or Nan Russell | 1-928-846-0927 |  |
| Greeters       | Cheri Hommel       | 565-5156       |  |
|                | Bill Darga         | 757-9401       |  |

Our next Show Meeting will be March 9th and March 25th call 1-928-846-0927

# Pietersite

Source: Wikipedia

**Shirley Darga** thought this might be of interest to the membership. Rough chunks can vary in price from \$40.00 to \$100.00 per pound.



Polished cab

The color is blue/black and the mineral exhibits a chatoyant (cat's eye) quality. It was discovered by Sid Pieters, Windhoek, Namibia, and is truly lovely.

Mr. Sid Pieters, the man who discovered the semi-precious stone Pietersite in 1962 while prospecting on a farm in Namibia, Africa. He came across a rather heavy small stone covered in white limestone. As he could not see what was in the stone, he took it back to his workshop in Windhoek, where he cut it open to discover the beautiful blue and gold colored patterns of the stone, which he later named after himself. He returned to the farm in Namibia where he began mining the stone, but after a short period of time, due to most of the material being stolen, he abandoned the mine. In the meantime however, he registered the find in the mineral records of Britain, and it was published in 1964 as Pietersite. Pietersite is one of the foremost stones used in jewelry and ornamental pieces worldwide, as it is a very hard and tough stone lasting for many years.



Pietersite from Namibia, Africa



Pietersite from China



Arizona Pietersite has been found near mines in Globe. Asbestos is part of the makeup and gives it the luminescence. They think that only old stock remains of this particular variety.

Arizona Pietersite



## Storage Trailer Work Crew

After the unloading was done, these happy folks are working at making the old trailer new again. More volunteers are welcome to join.

From left to right: Mary Gann, Dave Reimers, Gary Gann, Nan Russell, "C" Russell, Bob Nelson and Sara, Dave's golden retriever

Photo by Kathy Reimers



## February 21<sup>st</sup> Field Trip, Lizard Stone, Burro Creek Area

Report and Photos by Gary and Mary Gann



On a starkly frigid Saturday morning 17 Gemstoners and 3 guests loaded up into 10 vehicles and trundled out of the parking lot of Bash's shortly after 8AM. We were on our way to Wikieup to collect Lizard stone. The day warmed nicely, and everyone set about gathering rocks. It was more fun than the stone was collectable. "C" led a loosely formed line around the base of an eerily weathered hill, with columns and niches. Carefully sidestepping giant holes made by man and nature.



Jack and Mary are always at the top of the hill.

Jack checked out an ominous cave, reported that it was scary and empty.

Lorraine herded two nice yard rocks down the road to her jeep. Chalcedony was also liberally scattered about, looking very bright amid the greens of the Lizard stone.

Then it was on to the Agate fields on Burro Creek Crossing Rd. This is always a fun place to wander about. From small tumblers, to giant yard rocks, everyone gets something. Although I would have said a car couldn't handle these roads, Donna and Dennis made it look easy in their van. And kudos to Carolyn who braved the boulders and dips in her pickup.



From there it was a short distance to where pastelite can be found. The colors of these rocks blend in shades of pastel (hence the name?) that are awesomely beautiful. Here we ate lunch, visited with our guests Carol and Jerry Monk from the Havasu Rock Club, and Pete's daughter, Ann. Again, the rocks here are tumbler size to large gorgeous hunks that beg to be taken home and placed prominently in someone's yard. And, some of these amazingly formed rocks got their wish.

## February 28<sup>th</sup> Field Trip for Squiggly Jasper, Oatman Area

Leaving the Power House parking lot were 8 vehicles filled with 16 eager rockhounds bound for the Squiggly Jasper near Oatman. Among the Gemstoners were Tammy, and daughter, Destiny, guests on a first time trip. Tammy rode with Al, and Destiny made a new friend in Pete.

Staying off the freeway we took the 'scenic route' and it was worth it. On winding old route 66 we were treated to the sight of wild burros dotting the picturesque hills, some right at the side of the road. At the collecting site we came upon a few members of the Havasu club already on the hillside, among them was Carol and Jerry who visited us last week.

In short order people were digging, hammering and gathering nature's bounty. It lay among the bushes and cacti and boulders in colors ranging from white to pale blue, reds and browns and purples. After lunch Gary snapped a few group pictures, as that is the only time you can get a group, with their heads up and their butts down.

After lunch John and Laraine left for work while C led the rest of us to an abandoned mine tucked in the hills. The "Mole Pack", consisting of Jack, Cheri, Les, Mary and Destiny scurried in to explore the tunnel, emerging with pieces of quartz and quartz crystals. Everyone had a great time, and we are looking forward to the next trip.



## FIELD TRIP GUIDELINES - MCG



**Sign in is 15 minutes before departure.**

- Leader will state approximately how far, road conditions, and if 4WD is required when each member signs in.
- Each vehicle is to keep the one behind in sight and STOP if the car or truck is not visible (unless otherwise stated by the leader).
- Always notify the leader if you are hiking or driving to another site and your approximate return time. Participants must notify the leader if they are leaving the group and not planning to return and sign out (with time) and return the radio.
- Members are requested to wear name badges.
- Handheld radios: stay on Channel 3

### Field Trip Schedule

#### March 21st -22nd

Where:  Alamo Road/Keenan Camp  
 We will explore other areas too!  
 Collecting: Geodes and more  
 Meet: Powerhouse

Time: 8:00

Vehicle 4WD or High Clearance  
 Recommended

#### Come for the day or stay awhile

Bring: For the day or a few days. Pack what you need. Pick, Sledge, Pry bar, Collection Bag, Sun Screen, Lunch and Beverages it will be getting warm  
 Return: Sunday or Stay Longer  
 Distance: about 75 miles one way

#### April 18th Saturday

Where: Near Topock

Looking for: Jasper, petrified wood, chalcedony

Vehicle: 4 miles of wash that 4 wheel drive is necessary.

There is an area to park and then double up with other drivers.

Distance: 50 miles one way

Relatively flat walking some hillside collecting it will be shady in the morning

Meet: Powerhouse at 8 am

Mostly ground collecting

Bring Lunch and Plenty of Drink warm weather is starting.

Return: early afternoon

#### April 22nd -26th

##### Wednesday

Camping Trip, Burro Creek Campground off Hwy 93 south of Wikieup

Distance: about 70 miles

Meet: in campground, just drive thru and the members will be easy to spot every morning by 8:30 Am

Has running water and restroom facilities

Looking for: Exploring the area beyond the usual. It is a very picturesque land.

There is much to collect. Agate, pastelite, apache tears, chalcedony.

4 wheel drive is recommended for the exploration drives. Sharing a ride with others just about always works out. Come for the day or bring the camper or tent and stay a while.

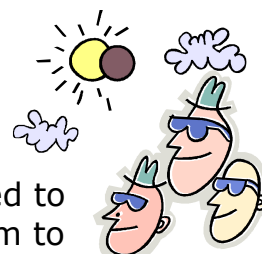
#### Saturday May 2nd

Kingman

Honey Onyx Claim

Off Stockton Hill Road

At least once a year we need to do maintenance on the claim to satisfy mining regulations and keep our yearly fee low.





## Chilly August in the Calico's?

By Jack Hommel

Yup, chilly. Goose bump chilly and yes, in August.

I once had the strange experience of being quite chilled in the midst of a Mojave desert summer.

In California's Calico Mountains, directly behind the famed Calico Ghost Town, there is a mine site called Bismarck. For many years it has been and continues to be alternatively active and dormant with no clear reason. As a result, the mountains are literally honeycombed with tunnels, shafts, winzes, drifts, etc.,etc..

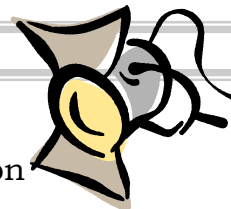
My son and I (being seasoned desert rats) had made a rather poor decision to go exploring in the hottest month of the year. It was, indeed, HOT! As I recall, the temperature was well in excess of 125 degrees Fahrenheit. But, as most of you know, the temperatures underground are greatly moderated by the earth's mass and are usually fairly pleasant, so we were pretty darned comfortable. We spent about half the day inside the mountain, later deciding to do some surface work. Once we got to trudging around on the exterior of the mountains with the sun's radiation and the mountainside's re-radiation of the stored heat, we began wondering about the wisdom of our decision to enjoy the desert on that particular day.

We had plenty of water with us so we began applying some to our clothing so we could take advantage of the resultant evaporative cooling. This worked fairly well, granting us the privilege of being merely miserably hot rather than being in danger of heatstroke. Despite the marginal relief the wet clothing gave us, the ambient heat made for tough going while climbing around among the rocks. As the day wore on and my stomach began screaming for food, we decided to seek shelter in one of the many mine tunnels and have lunch.

Now, here comes a bit of interesting science: There is a rule of practical physics called Bernoulli's Law or Bernoulli's Theorem. In simplified form it states that expanding gasses cool as they expand. Its immediate benefit to us was in the fact that we accidentally chose to sit in the exit point of a mountain full of holes which were full of gas (our atmosphere). As the air leaving the mountain expanded upon its leaving the slightly greater pressure inside the complex of tunnels, it cooled. Since we were very fortuitously sitting at the point of greatest expansion of a mountain full of air, we enjoyed a very noticeable temperature drop. Initially this was almost as much fun as going to Disneyland. After a very few minutes of giggling about finding such cool air, we discovered that the exceedingly effective evaporative cooling provided by our wet clothing and the very cool exiting air mass had us both shivering and shaking. So there we were, on one of the Mojave Desert's hottest days, covered with goose bumps and hugging ourselves. We finally had to go back out in the open just to get warmed enough to stop shivering!

Thus.....A chilly August day in the Calico's.





## IN THE SPOTLIGHT

Life Member Lucille Thompson

By Leonard Deutsch



Mrs. Thompson has 92 years of living under her belt. She told me that she had first joined the club because her son was a little shy and that he liked rocks. That was in the early 1960's when her son was about 12 years old. He is now retired. She remembered that John Wright was the founder of the Gemstoners' club and that it was a new club. She stated that although her son lost interest in rocks and minerals, she caught the bug and started collecting and polishing slabs. She said that she still has a table with slabs mounted on it. She also told me that a number of years ago, someone sold the rest of her rocks she had in a shed. She has not been to any meetings nor collected due to her health. Her son stayed in the club until he went in the Navy in 1968. He didn't stay with the club as an adult.

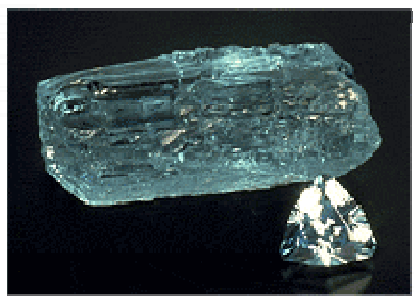
In the future we hope to have more information on the history of the club and its members.

### March Birthstone: Aquamarine

Birthstone Color: Pale Blue to Bluish green but is typically light in tone

Mohs Hardness: 7.5-8 Luster: vitreous to resinous

Crystal System hexagonal Cleavage almost never seen



If you can picture the cerulean blue waters of the Mediterranean, you will understand why the birthstone for March is named Aquamarine. Derived from the Roman word "Aqua," meaning water, and "mare," meaning sea, this pale blue gem does indeed resemble the color of seawater. The ancient Romans believed that the Aquamarine was sacred to Neptune, the god of the sea, having fallen from the jewel boxes of sirens and washed onto shore. Early sailors wore aquamarine talismans, engraved with the

likeness of Neptune, as protection against dangers at sea.

The association with water led to the belief that the Aquamarine was particularly powerful when immersed. Water in which this gemstone had been submerged was used in ancient times to heal a variety of illnesses of the heart, liver, stomach, mouth and throat. Aquamarines were also used to reverse poisoning and to aid in fortune telling.

The Aquamarine is a member of the beryl family. Beryl is a mineral that crystallizes within large grained igneous rocks on the earth's crust. It varies in color from clear to vibrantly colored gemstones such as the Emerald. Beryl was used as far back as 2,000 years ago to correct vision, and it continues to be used today in the manufacture of eyeglasses. It is a very hard mineral, making the Aquamarine a durable gemstone for use in jewelry.

Aquamarine varies in color from blue-green to a light sky blue, but gems containing green are often heat-treated to remove this less desirable color. The majority of Aquamarines, unlike other gemstones, are flawless. It is a relatively abundant gem, the largest deposits being in Brazil, but other sources of Aquamarine are in China, India, Australia, Africa, and the United States.

A gift of Aquamarine symbolizes both safety and security, especially within long standing relationships. Some people even say that the Aquamarine reawakens love in a tired marriage, so if you want to bring back that spark in your partner's eyes, you might consider this gem as an anniversary gift!

#### Alternate Birthstone

An alternate birthstone for March is Bloodstone, dark green opaque quartz flecked with red spots. The name Bloodstone derives from the legendary belief that the red coloration resulted from the blood of Christ spilling onto green jasper during the crucifixion. For this reason, too, the stone has been called "martyr's stone." Bloodstone is mined in India, Brazil, Uruguay, Australia, and the United States. Ideal for carving into cameos and beads, this stone symbolizes courage.

Source: [www.aboutbirthstones.com](http://www.aboutbirthstones.com)

**KINGMAN LIBRARY  
DVD SERIES 6:15  
3RD WEDNESDAY**

**Wednesday**

**March 18 at 6:30 PM**

Streams—The Major Agent of Erosion  
Sculpting of the Landscape  
Stream Erosion in Arid Regions

**Wednesday, April 15 at 6:30pm**

Ice Sculpts the Final Scene  
Groundwater  
The Production of Groundwater

**Wednesday, May 20th at 6:30pm**

Karst Topography  
Groundwater Contamination  
Rock Deformation

**SHOWS**



March 13, 14, 15, 2009  
Cottonwood

**Verde Valley Gem and Mineral  
Show &**

**Jewelry Show**



Verde Valley Fairgrounds,  
800 E. Cherry St  
Cottonwood, AZ 86326

Sponsored by:

Mingus Gem and Mineral Club  
[www.mingusclub.org](http://www.mingusclub.org)

Hours: Fri., Sat. 9-5, Sun. 10-4

Admission: \$3:00, children free



**FOR SALE  
OR TRADE**

**Slab Saw wanted  
Bill Darga  
757-9401**

**Sluice Box wanted call  
Dennis 263-1480**

**Gary Gann needs a 1/2  
HP Motor, 1/2" Shaft,  
1725 RPM. Home: 757-  
8121 or Cell: 971-563-  
3468**

**Happy Birthday**

Dennis Robinson 13th

Nan Russell 22nd

Bob Nelson 26th



Show Chairperson Doug Evenson  
928-634-0459,  
[dougeverson@cableone.net](mailto:dougeverson@cableone.net)

Correction: Dick Zimmerman  
gave last month's presentation  
not Dave Zimmerman

*Happy  
Anniversary*

"C" & Nan Russell

**Repetitive Motion Ailments**

One example of a repetitive motion injury is "trigger finger," a form of tendonitis brought on by repeatedly grasping an object. This condition is an inflammation of the flexor tendon in any of the fingers (including the thumb). This swelling makes it difficult for the flexor tendon to glide easily through the tendon sheath which surrounds it. As a result, there may be a popping or clicking sensation when moving the finger. At times the finger locks in a curled position. If the finger locks, surgery will probably be required. If, however, the joint can be palpated (very gently examined) and mobilized (passively moved), the condition can often be treated with anti-inflammatory injections (administered by a physician), splinting, and other therapies.

DeQuervain's Disease is a painful condition that involves the tendon of the thumb and the distal radius. (The distal radius is the end of the forearm bone that lines up with your thumb.) As with trigger finger, the tendon swells and is unable to move freely within the sheath located at the wrist near the base of the thumb.

DeQuervain's falls into the repetitive motion category of problems, though it can also be brought on by traumatic injury or aging. Options for treating DeQuervain's are similar to those for trigger finger.

Source: [www.apta.org](http://www.apta.org)

**Simple exercises to  
maintain flexibility**

These tendon-gliding exercises are often prescribed by physical therapists.



Make a straight palm...then a hooked fist...

...now make a "straight" fist...and a full fist

**Wrist Flexion  
exercises:**

Top - while holding hand straight, bend wrist down as shown.



Bottom - Lay hand on a flat surface and extend upward.




# March 2009

**Sun      Mon      Tue      Wed      Thu      Fri      Sat**

|               |                |  |                               |    |    |                     |
|---------------|----------------|--|-------------------------------|----|----|---------------------|
| 1             | 2              | 3 Board Meeting @ Library 6:00 PM  | 4                             | 5  | 6  | 7                   |
| 8             | 9 Show Meeting | 10 Pot Luck 6:30   | 11                            | 12 | 13 | 14                  |
| 15            | 16             | 17  | 18 Library DVD Series 6:15 PM | 19 | 20 | 21 Alamo Rd Campout |
| 22 Alamo road | 23             | 24   | 25                            | 26 | 27 | 28                  |
| 29            | 30             | 31   |                               |    |    |                     |

# April 2009

**SUN      MON      TUE      WED      THU      FRI      SAT**

|  |    |                            |   |    |                     |                      |
|--|----|----------------------------|---|----|---------------------|----------------------|
|  |    |                            | 1                                       | 2  | 3 <b>SHOW SETUP</b> | 4 <b>GEM SHOW</b>    |
| 5 <b>GEM SHOW</b>  | 6  | 7                          | 8                                       | 9  | 10                  | 11                   |
| 12  | 13 | 14 Regular meeting 7:00 PM | 15 Library DVD Series 6:15 PM           | 16 | 17                  | 18 Field trip Topock |
| 19   | 20 | 21                         | 22 Field Trip Burro Creek Campout 22-26 | 23 | 24                  | 25                   |
| 26   | 27 | 28                         | 29                                      | 30 |                     |                      |



**2009**

# **ROCK, GEM & CRAFT SHOW**

**Sponsored by**

**MOHAVE COUNTY GEMSTONER'S**

**April 4th & 5th**

**Hours Sat 9 to 5 Sun 9 to 4**

**Dealers**

**Crafts**

**Jewelry**

**Fossils**

**Rough Material**

**Minerals & Gems**

**Free**

**Admission**



**Club Displays**

**Silent Auction**

**Raffle Prizes**

**Kingman Academy of Learning**

**3419 Harrison Kingman, Az**

**For more Info contact Pete 565-4321 or**

**Dave 692-3797**

An organization dedicated to the social activities, education, sharing of information about and just plain fun of looking for special "gifts" of beauty abounding on our planet.